

# Drum Agitator Air Drive

## DM-05DAD/GR Replacement Mixer Drive

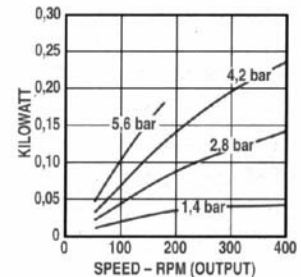
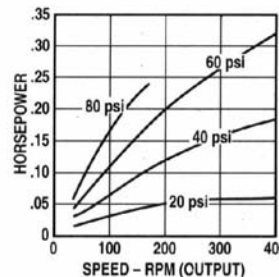
15:1 Gear Reduced, 8 Vane, 1/3 Hp @ 60 Psi

Suitable for use with the Woodman Drum Agitator  
and some other built-in drum agitators

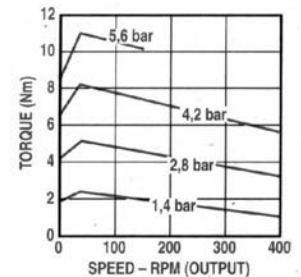
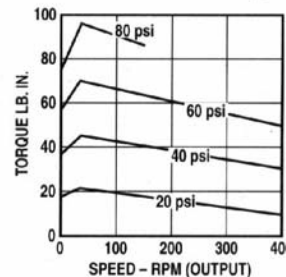
Max. allowable end thrust with 0 overhung load is 100 lbs. (45,0 kg). Max. overhung load with 0 end thrust ranges from 100 lbs. (45,0 kg) at 333 rpm to 200 lbs. (90,0 kg) at 33,3 rpm. Max. recommended pressures to 80 psi (5,6 bar).



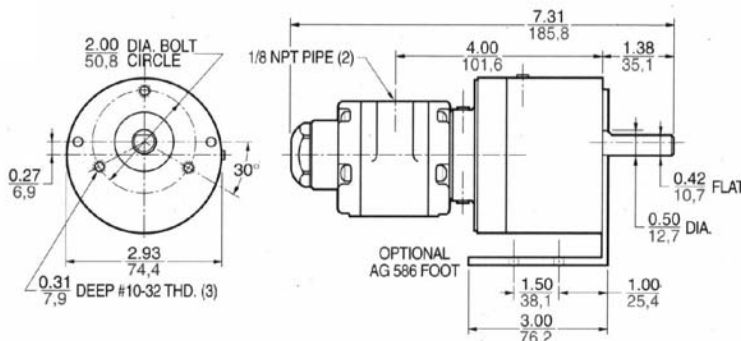
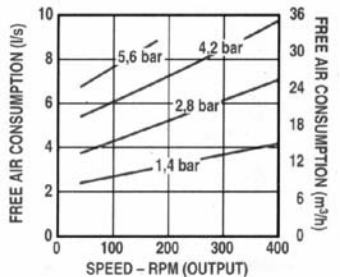
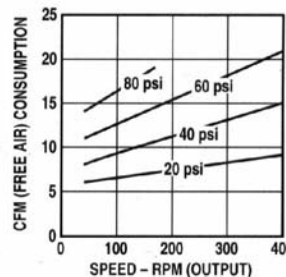
Output Power vs. Speed



Torque vs. Speed



Air Consumption vs. Speed



DRUM-MATES® pump and mixer equipment assemblies are supplied as components, each sold separately. Ask for literature on DRUM-MATES® drum/tote mixers, drum tumblers, drum/tote pumps & hand nozzles. DRUM-MATES® Inc., Liquid Processing Equipment Div., Tel: 609-261-1033, Fax: 609-261-1034