

Air Operated Drum & Tank Pumps

Model DM-55DPF Pneumatic Pump Drive

Pump Tubes: 316SS, Polypropylene, CPVC, Kynar (PVDF)

Specifications, Parts Codes & Views

For Use in Factory, Laboratory, Shop and Field

A high performance, industrial duty, ergonomic, pneumatic pump for most types of thin-bodied up to medium thick (450 Cps) liquids of all kinds including chemicals, cleaners, concentrates, corrosives, non-flammable solvents and many liquid compounds compatible with the equipment materials listed here. Can be bung or clamp mounted for secure pumping in pails, drums, totes or tanks. This equipment is generally interchangeable with other drum pump brands.

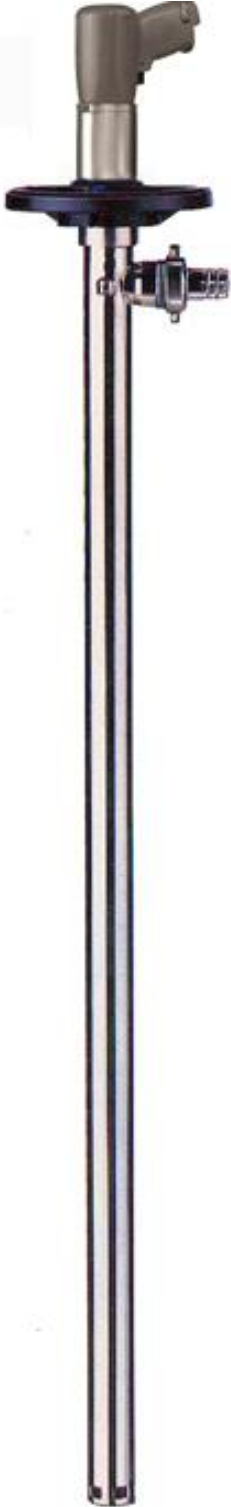
Drum Pump Drive Specifications

This interchangeable pneumatic pump drive is designed for use with any type of "DP" series drum or tote/tank pump tubes. Operating specifications are included with each assembly. It will provide variable flow control with an unlimited dry-run cycle. Use the bung safety adapter **DM-55BA/PP** or **ISS** for tube security and the **DM-55PWB-L** hanging bracket for safe tank mounting or wall storage.

Model DM-55DPF Pump Drive, ¾ Hp (550 watts), Max. 33 Gpm (145L), 750 Cps., 28 cu. ft./min. @ 90 Psi – 10,000 Rpm. Wt. 3.5 lbs. (1.4 Kg.) Aluminum housing is Plastisol coated to prevent sparking. Metal mounting bracket. Consult with a qualified Safety. Not for flammable use. Drive transfers up to a 29 ft. head, or up to 42 ft. and 1500 Cps with special **High-Head** pump tube.

Pump Tube Specifications

Most pump tubes available in 39", 47" 60" and 72" with internals of Teflon, ceramic, carbon, Hastelloy and maximum operating temperature up to 180°F. Tube diameter, 1.625" (41mm), dispensing port, 1.0" OD hose barb. Tubes are available in stainless steel, max. 180°F, polypropylene, Max.130°F, and Kynar (PVDF) 180°F, Choose the pump tube most compatible with your application liquid and thickness. A "High-Head" HH version of these pump tubes is available, increasing both the head (pumping height) and thickness capacity of the pump. The tube pictured here is representative of the other tubes.

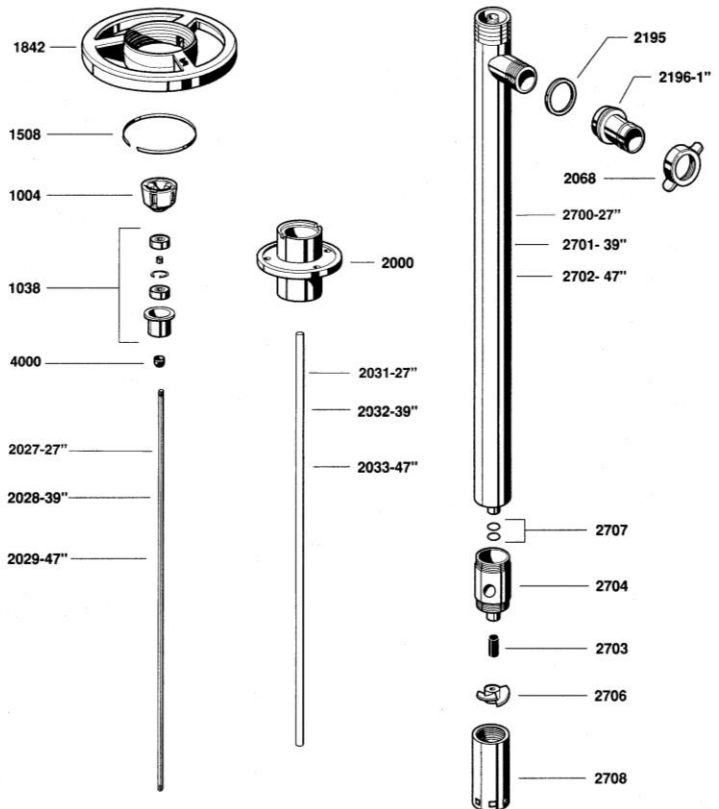


DM-55DPF Pump
& 316 S.S. Tube



Model DM-55DPF
Drum Pump Drive

SEAL-LESS 316 SS PUMP TUBE



DM-SS8339 Stainless Steel Drum Pump Tube

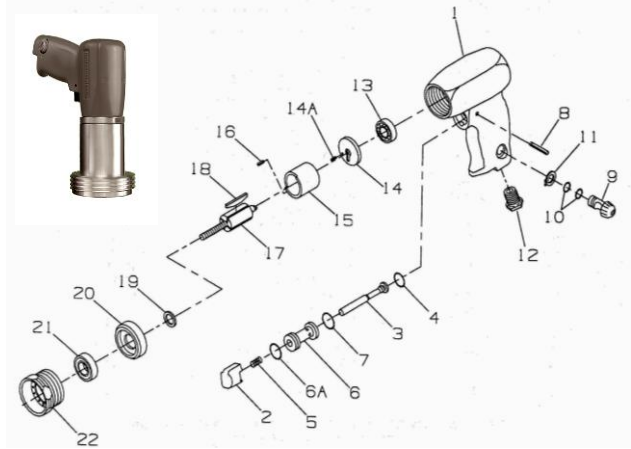


CAUTION!

These air motors are not recognized
for use in flammable operations.

Model No. DM-55DPF

Parts List & Expanded Parts View



Item No.	Part No.	Part Description
1	5317-40	Motor housing
2	S317-93	On/Off Trigger
3	S317-A302	Throttle valve assembly
4	S317-103	Throttle valve seal
5	S317-51	Throttle valve spring
6	S317-A503	Throttle valve body assembly
6A	S7802-291	Valve body seal
7	S7802-291	Valve body seal
8	S317-120	Valve body retaining pin
9	S3177A249	Speed regulator assy.
10	S310-169	Regulator seal (2 req'd)
11	S317-118	Regulator retainer
12	S317-38	Inlet bushing
13	S222-22	Rear rotor bearing
14	S317-A12	Rear end plate assembly
14A	S308-98	Dowel (end plate)
15	S317-A3	Cylinder assembly
16	S308-98	Cylinder dowel
17	S317-53	Rotor
18	S317-42-4	Rotor vanes (4)
19	S317-65	Rotor spacer
20	5317-11	Front end plate
21	S317-22	Front rotor bearing
22	S317-27	Motor locknut
Not Shown	SAF-350	Muffler with replaceable felt filter element.

Warnings & Notices

CAUTION

Before unpacking this motor, read and fully understand all safety and operating instructions. This pump is not for use with flammable liquids or in a flammable area.

SERVICE

Use the DM-55DPF motor Service Kit to maintain the highest working level, and prevent operation down-time. Replace the SAF-350-FF Muffler Felt Filter Element regularly to prevent blockage from oil and contaminants and ensure best motor torque and Rpm.

IMPORTANT: Operator must always wear all necessary safety equipment including , safety eyeglasses, respirator, safety gloves, apron, shoes and noise protection.

Warranty Compliance Notice

The DM-55FRL or an equivalent FRL (air filter, pressure regulator and automatic oiler) must be used to maintain drive performance.

Optional Accessories:

DM-55PWB-L, pump safety storage bracket, vinyl coated steel
 DM-55DP0150/SK, pump service kit with 2 year internal parts
 DM-55DPFM, Flow meter, 4-31 Gpm, 59 Psi, Accur: +/- 1%, 1" Npt
 Hand Dispensing Nozzles (see below)



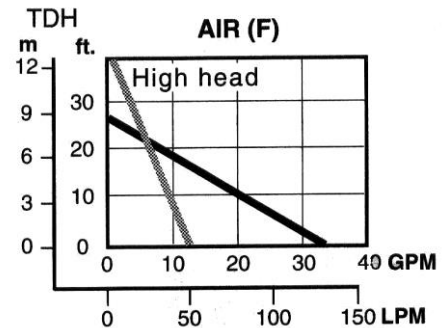
DM-85HFR Series Nozzles
Polypropylene, SS, Viton



DM-700HFR Series Nozzles
AL, Brass or SS, Viton, TFE



DM-800HFR Series Nozzles
316 Stainless steel & Teflon



Ask for literature on DRUM-MATES® drum/tote mixers, drum tumblers, drum/tote pumps & hand nozzles.
 DRUM-MATES® Inc., Liquid Processing Equipment Div., Tel: 609-261-1033, Fax: 609-261-1034